

Lansinoh®

Compact Single Electric Breast Pump

Instructions for Use



EN

Important Safeguards

The Lansinoh® Compact Single Electric Breast Pump is a personal care item and for hygienic reasons should never be shared between mothers or resold from one mother to another. Either of these actions will void the warranty.

If you are a mother who is infected with Hepatitis B, Hepatitis C or Human Immunodeficiency Virus (HIV), pumping breastmilk using the Lansinoh® Compact Single Electric Breast Pump will not reduce or remove the risk of transmitting the virus to your baby through your breastmilk.

When using electrical products, especially when children are present, basic safety precautions should always be maintained, including the following:

Read All Instructions Before Using

Danger: To reduce the risk of electrocution:

- Always unplug this product immediately after using.
- Do not use while bathing.
- Do not place or store this product where it can fall or be pulled into a tub or sink.
- Do not place or drop pump into water or other liquid.
- Do not reach for an electrical product that has fallen into water. Unplug immediately.

Warning: To reduce the risk of burns, electrocution, fire, or injury to persons:

- This product should never be left unattended when plugged in.
- Close supervision is necessary when this product is used near children.
- Use this product only for its intended use as described in this manual. Do not use attachments not recommended by the manufacturer.
- Never operate this product if it has a damaged cord or plug, if it is not working properly, if it has been dropped or damaged, or dropped into water.
- Keep the cord away from heated surfaces.
- Never use while sleeping or drowsy.
- Never drop or insert any object into any opening or tubing.
- Do not use this product if it is broken or any parts are missing.
- Do not allow small children or pets to play with the pump unit, AC adapter, etc.
- Do not use outdoors with the AC adapter or operate where aerosol spray products are being used or where oxygen is being administered.

Packaging materials are not part of the product. For your child's safety, please remove and discard all packaging materials prior to use but read and retain the instructions for future reference.

Save these instructions and your receipt for future reference.

Lansinoh's Customer Service team is here to help. If you experience any issues with the product, please call our Customer Service Department at **+44 (0) 113 205 4201**, email help@lansinoh.co.uk or contact your country distributor. Health protection & Hygiene i.e. for health protection and hygiene reasons, breast pumps may not be returned or exchanged once the hygiene seal has been broken. If your product is faulty, please contact our Customer Service Department.

1. QUICK START GUIDE	2
2. PUMP	2
2.1 Breast Pump Parts and Accessories	2
2.2 Cleaning Instructions	3
2.3 Assembling the Breast Pump	4
2.4 Using the Breast Pump	4
2.5 Breast Cushion Sizing	5
2.6 Pumping Tips	5
2.7 Troubleshooting	5
3. BREASTMILK STORAGE GUIDELINES	6
4. LANSINOH® BOTTLE WITH NATURALWAVE® TEAT	7
5. TECHNICAL DATA	8
5.1 Power Supply	8
5.2 Control System	8
5.3 Regulatory Compliance	8
6. CUSTOMER SERVICE	8
7. WARRANTY	8

1. QUICK START GUIDE

DO NOT wash tubing or connector.

Before first use, clean all parts that will come into contact with milk according to instructions on page 3, section 2.2.

Assembly

Proper assembly is essential to ensure proper function and suction.



Insert purple diaphragm so that feet align with the cutouts on the breast cushion body



Attach clear cover and twist so tubing connector is at the back



Attach breast cushion



Insert valve



Attach bottle



Attach tubing



Secure connector

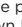

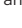


Attach to electric pump unit

Getting Started

Hold the Breastmilk Expression Set to your breast so your nipple will extend straight toward the nipple tunnel of the breast cushion. Make sure the breast completely fills the breast cushion so that a vacuum is formed and no air escapes. Make sure the set is tilted slightly downward to allow milk to flow into the bottle.

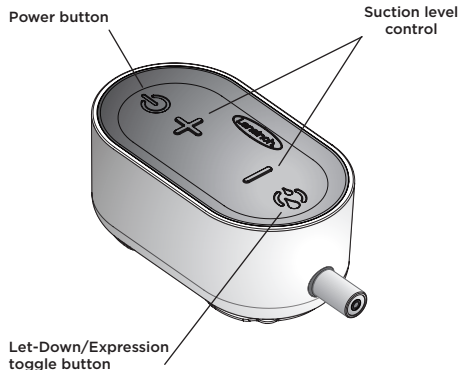
Using Let-Down and Expression Phases

- Press the power button  to start the pump in Let-Down Phase. Let-Down Phase will run automatically for 2 minutes.
- To begin the Expression Phase sooner, press the Let-Down/Expression toggle button  to move to the Expression Phase. Press  again at any point to switch back to Let-Down Phase.
- Let-Down Phase is a faster pumping style that mimics the short, rapid sucking your baby uses to initiate milk flow.
- Expression Phase mimics the slower, deeper sucking of feeding, and features 5 adjustable suction levels that can be tailored for your comfort.
- The breast pump features LED lights beneath the purple keypad to indicate which setting you are on.

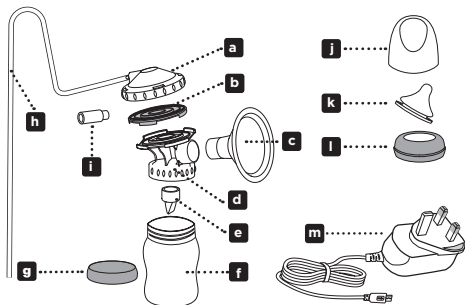
2. PUMP

2.1 Breast Pump Parts and Accessories

Breast pump unit



Only use the Lansinoh® Compact Single Electric Breast Pump with Lansinoh® Breastmilk Expression Set.



Breastmilk Expression Set	Item Number
a Diaphragm Cap	P53410
b Diaphragm	P53402
c ComfortFit® Breast Cushion (25mm)	P54103
d Breast Cushion Body	P53454
e White Valve	P53401
f 160ml (5oz) Bottle	P53451
g Sealing Cap	P53461
Breast Pump Parts and Accessories	Item Number
h Silicone Tube (800mm)	P54100
i Pump Connector	P54106
j Teat Cover	P53462
k NaturalWave® Slow Flow Teat	P75900
l Teat Collar	P53463
m AC Adapter	P53470

2.2 Cleaning Instructions

Unless otherwise instructed by your health care provider, follow these instructions.

DO NOT wash tubing or connector.

Before First Use

- Always wash and dry hands thoroughly with soap and water before handling the Breastmilk Expression Set.
- Disassemble the Breastmilk Expression Set and place parts in a large pot.
- Cover the parts in water making sure there is room for all of the parts to float freely in the pot.
- Bring the water to the boil and allow the parts to a boil for 5 minutes.
- After boiling remove the parts from the pot with tongs and place the pieces neatly on a clean paper towel or in a clean drying rack and allow them to air dry.

- Allow the parts to dry completely before assembly and use. Partially dried parts may affect the operation of the pump.
- Once parts are dry they can be stored in a clean plastic tub with a lid or in a clean plastic zipper bag.

Before Each Pumping Session

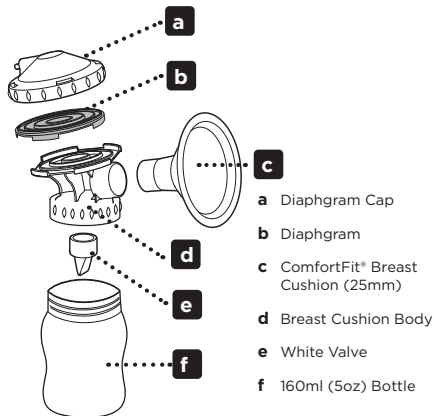
- Always wash and dry hands thoroughly with soap and water before handling the Breastmilk Expression Set.
- Before assembling the Breastmilk Expression Set, be sure that all of the parts are completely dry.
- Visually inspect the individual components for cracks, chips, tears, discoloration or deterioration. These may affect the functionality of the pump.
- Should you have any questions or concerns about your parts please visit www.lansinoh.co.uk, call **+44 (0) 113 205 4201** in the UK, or contact your country distributor for guidance.

Cleaning After Each Pumping Session

- Disassemble the Breastmilk Expression Set, setting aside tubing and connector.
- Rinse all parts with cold water immediately after use. Place pump parts in a clean wash basin used only for washing infant feeding equipment. Do not place pump parts directly in the sink because germs in sinks or drains could contaminate the pump.
- Hand wash all parts of the Breastmilk Expression Set using warm soapy water. A teat brush may be used to scrub the hard plastic pieces of the Breastmilk Expression Set, but should not be used on the white valve or diaphragm.
- Rinse parts with running clean, warm water, or by submerging in fresh water in a separate basin that is only used for cleaning infant feeding equipment.
- Place parts in a pot and cover with water making sure there is room for all of the parts to float freely in the pot.
- Bring the water to a boil and allow to boil for 5 minutes.
- After boiling remove the parts from the pot with tongs and place the pieces neatly on a clean paper towel or in a clean drying rack and allow them to air dry. Do not use a dish towel to rub or pat items dry because doing so may transfer germs to the items.
- Allow the parts to dry completely before assembly and use. Partially dried parts may affect the operation of the pump.
- Once parts are dry they can be stored in a clean plastic tub with a lid or in a clean plastic zipper bag.
- Clean your wash basin and bottle and/or teat brush after each use.
- The pump unit should be wiped down with a clean paper towel or soft cloth after use. The pump unit should never be put into water or other liquids for cleaning.

Parts can be cleaned in a steam or microwave steriliser. Be sure to follow the manufacturer's instructions.

2.3 Assembling the Breast Pump



2.4 Using the Breast Pump

The Lansinoh® Compact Single Electric Breast Pump is very easy to use, offering several settings that you can customise to maximise your milk production and comfort.

Let-Down and Expression Phases

When babies breastfeed, they start with quick sucking to stimulate your milk let-down and flow. Once your milk has let down, the baby draws the milk out with slower, deeper sucks. To simulate this natural rhythm, the Lansinoh® Compact Single Electric Breast Pump offers 2 phases – the Let-Down Phase and the Expression Phase.

- Let-Down Phase is a faster pumping style which mimics the short, rapid sucking your baby uses to initiate milk flow
- Expression Phase mimics the slower, deeper sucking of feeding and features 5 adjustable suction levels that can be tailored for your comfort.

The switch between the 2 phases can be easily operated using the Let-Down/Expression toggle button . Let-Down Phase is identified on the keypad with slowly dimming LED lights. Expression Phase is identified on the keypad with still LED lights.

When the pump is turned on, it starts in Let-Down Phase and will automatically switch to the Expression Phase after 2 minutes. If your milk starts flowing before the 2 minute transition, you can switch to Expression Phase at any point by pressing the button. You can always return to the Let-Down Phase when needed by pressing the button again.

Operating the Breast Pump

- Ensure that the breast pump has been properly cleaned. Wash your hands thoroughly and make sure your breasts are clean.

- Ensure the breast pump and the Breastmilk Expression Set have been correctly assembled and the silicone tube is securely attached to the pump via the tubing connector and to the diaphragm cap.
- Hold the Breastmilk Expression Set to your breast with the centre of your nipple extending towards the tunnel of the ComfortFit® breast cushion.
- Make sure the breast completely fills the ComfortFit® breast cushion so that a vacuum is formed and no air escapes.
- The Breastmilk Expression Set and nipple tunnel must tilt slightly downward to allow milk to flow naturally toward the bottle.
- Press and hold the On/Off button for a few seconds to turn the pump on.
- The breast pump will always start in Let-Down Phase Level 3 and will automatically switch to Expression Phase after 2 minutes. If your milk starts flowing before the 2 minute transition, you can switch to Expression Phase at any point by pressing the button. You can always return to the Let-Down Phase when needed by pressing the button again.
- You can increase the suction level by pressing the button. You can decrease the suction level by pressing the button. A maximum of 5 LED lights will illuminate depending on the selected suction level.
- **Note: If at any time the suction becomes uncomfortable, reduce it by pressing the button.**
- When a pumping session is finished, turn the pump off with the On/Off Button .

Ensure there is no suction on the nipple before removing the ComfortFit® breast cushion from the breast. If necessary, break the suction by inserting a finger between the breast cushion and the breast. Once the suction is broken, the ComfortFit® breast cushion can be removed safely.

- Carefully remove the bottle from the breast cushion body and close the bottle with the sealing cap provided. Please follow the breastmilk storage guidelines as outlined in Section 3.
- **Note: If the pump unit is left on and unattended for more than 60 minutes, it will automatically power off.**

Power Options

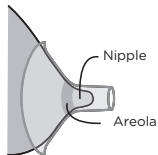
The pump may be operated using the following power supply modes:

- AC adapter
Connect the adapter to the power connector socket, which is located on the same side of the pump as the On/Off button. Plug the AC Adapter into an available electrical outlet. Electrical safety can only be achieved when the breast pump is connected to the AC Power Adapter supplied with the product (See “Technical Data” section).
- Power bank (not included)
Connect the power bank USB cable to the power connector socket, which is located on the same side of

the pump as the On/Off button. Electrical safety can only be achieved when the breast pump is connected to the power bank specified power supply. (See “Technical Data” section)

We recommend using your pump with the AC adapter provided.

2.5 Breast Cushion Sizing



When you are pumping only your nipple and a small amount of your areola should be pulled into the breast cushion tunnel. If a large amount of areola is being pulled into the tunnel, this indicates that the breast cushion is too large. You need a smaller size.

When you are pumping your nipple should move in and out of the tunnel freely. If you notice that your nipple is touching or rubbing along the sides of the tunnel, this indicates that the breast cushion is too small. You need a larger size.

The breast cushion you received with the pump is 25mm. A 30.5mm ComfortFit® breast cushion is available for purchase. Simply visit www.lansinoh.co.uk, call +44 (0) 113 205 4201 in the UK, or contact your country distributor for guidance.

2.6 Pumping Tips

Breastmilk is produced on a supply and demand basis. Expressing your breastmilk regularly will stimulate your body and help you maintain your milk supply. If you have any breastfeeding or breast pump related questions, consult an International Board Certified Lactation Consultant (IBCLC), breastfeeding counselor, or other healthcare provider such as your midwife or health visitor.

Top Tips for Pumping Sessions

- Before a pumping session, make yourself comfortable and ensure the breast pump is close to you.
- Sit in an upright position, making sure your shoulders and arms are well supported.
- The most important part of successful pumping is the ability to trigger the let-down reflex. This is when your milk begins to flow freely. Warm compresses applied to the breasts and gentle, circular massaging of the breasts prior to and/or during a pumping session can help encourage this natural reflex. Heated Lansinoh® Thera®Pearl® 3-in-1 Breast Therapy Packs fulfil this function well.
- If you and baby are apart, look at their pictures or videos, or have something with your baby’s scent on it. These cues will help to trigger let-down.

- If baby is with you, skin-to-skin contact and scent will help to trigger let-down. You may pump one breast while nursing baby on the other. This allows you to maximize pumping effectiveness by using the let-down reflex stimulated by your baby’s sucking.
- Give yourself sufficient time to pump. Stress can negatively impact milk production.
- Stay hydrated; having a glass of water before and during each session is important for milk production.
- Many mums find that they have a high milk supply in the morning after sleeping, so you may find it helpful to try a morning pumping session.
- Some mums can achieve more than one let-down during a pumping session. You may be able to achieve a second by returning to the Let-Down Phase by pressing the Let-Down/Expression toggle button.
- Track the date, time, and duration of your feeding and pumping sessions as well as the amount of milk expressed from each breast. Keeping these records can help you identify trends or patterns so you can establish your optimal feeding and pumping routine. If you’re having any difficulties, it can be helpful to share this information with your healthcare professional.
- You can save time and prevent messy milk transfers or spills by pumping directly into Lansinoh® Breastmilk Storage Bags. Just ensure that your Lansinoh® Breastmilk Storage Bag has white and purple flowers and a white line above the logo. If your bag does not have this design, it is not compatible with pumping directly into the bag. NOTE: Pumping directly into bags requires two hands to safely remove milk storage bags. Visit www.lansinoh.co.uk to learn more.

2.7 Troubleshooting

Issue	Solution
The pump does not turn on	<p>If you experience an interruption in the normal operation of the electrical and/or mechanical functioning of the pump, simply do the following:</p> <ul style="list-style-type: none"> ● Check to confirm the AC adapter or power bank is securely connected to the pump. ● If you are using the AC adapter, unplug it from the electrical outlet, wait a few seconds, and then plug it back into the electrical outlet. ● If you are using a power bank, unplug it from the pump, wait a few seconds, and then plug it back in. <p>If you encounter further problems, please visit www.lansinoh.co.uk, call +44 (0) 113 205 4201 in the UK, or contact your country distributor for guidance.</p>

I experience pain when I express	If you feel any discomfort, you may need a different size breast cushion. Visit www.lansinoh.co.uk , call +44 (0) 113 205 4201 in the UK, or contact your country distributor.
I do not feel any suction or the suction is very low	<p>If it feels like the suction has decreased, try the following:</p> <ul style="list-style-type: none"> While pump is on, remove the tubing from the diaphragm cap and place a finger over the tubing connector. If you feel suction, the pump is operating properly, but the Breastmilk Expression Set may not be correctly assembled or the white valve may be damaged. If you don't feel any suction, try unplugging the pump, wait a few seconds, and plug it back into the electrical outlet. Make sure the Breastmilk Expression Set has been properly assembled. Check the assembly information in Section 2.3, page 4. Confirm that all connections (especially the tubing) are secure. Make sure the breast cushion forms a complete seal around the breast. Inspect the white valve for a tear or pinhole. This component is critical to achieving proper suction. Replace the white valve with one of the spare valves provided with the product.
I accidentally washed the tubing	If you notice any condensation or anything that may be mould, discard the tubing and contact our customer service team to purchase a replacement.

3. BREASTMILK STORAGE GUIDELINES

Breastmilk Storage and Thawing Guidelines for Healthy Term Babies

Check with your healthcare professional or an International Board Certified Lactation Consultant for specific storage instructions. When freezing breastmilk, store in the back of the freezer. Do not store breastmilk in the freezer door as the temperature can fluctuate when the door is opened and closed.

Before storing, date all breastmilk and use the oldest breastmilk first.

Milk Storage Guidelines, Full term infant			
WHERE	TEMPERATURE	TIME	ACTION
At Room Temperature	60-80°F (19-26°C)	4 hours (ideal) up to 6 hours (acceptable)	Contents should be covered and kept as cool as possible; covering the container with a damp towel may keep milk cooler
Insulated Cooler Bag	5-39°F (-15 - 4°C)	24 hours	Keep ice packs in constant contact with milk containers; limit opening cooler bag
In a Refrigerator	<39°F (<4°C)	4 days (ideal) up to 5 days (acceptable)	Store milk in the back of the main body of the refrigerator
Freezer	0°F (-18°C)	3 months (ideal) up to 6 months (acceptable)	Store milk away from sides and toward the back of the freezer
Deep Freezer	-4°F (-20°C)	6 months (ideal) up to 12 months (acceptable)	where temperature is most constant

Source: La Leche League International 2017

These breastmilk storage guidelines are a recommendation. Contact your health professional or consult your country's national guidelines for further information.

Thawing Breastmilk

Thaw frozen milk in the refrigerator or place the containers under cool running water, gradually warming the water until the milk is thawed. Thawed milk can be kept in a refrigerator for up to 24 hours.

DO NOT refreeze milk once it is thawed.

Gently swirl thawed milk before feeding to mix the layers that have separated. Breastmilk is not homogenized and the "cream" will rise to the top. Breastmilk can vary in colour and consistency depending upon the time of the day that the milk was expressed, what you have eaten, and the age of the baby at the time of pumping. For further advice, please contact your health care professional.

DO NOT microwave breastmilk!

microwaving alters the composition of the milk. Microwaving also may create "hot spots" in the milk that could burn the infant.

DO NOT thaw breastmilk in hot or boiling water.

4. LANSINOH® BOTTLE WITH NaturalWave® TEAT

Clinically proven to maintain established breastfeeding patterns*

Exclusive breastfeeding is recommended for the first six months of baby's life. Breastfeeding should be firmly established before introducing a bottle and teat.*

The Lansinoh® NaturalWave® teat enables baby to engage in instinctive feeding motions learned at the breast.*



Latching on

Baby's lips open outward and latch onto the areola.



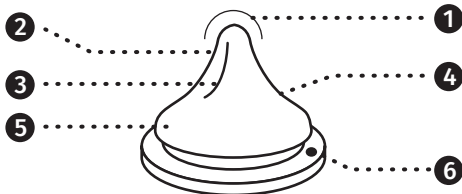
Peristaltic "wave-like" tongue movement

Tongue moves in a smooth "wave-like" motion to compress the nipple and extract milk. This encourages natural oral, jaw and facial development.



Swallowing

Back of baby's tongue rises, channeling the milk into the oesophagus.



1. Teat tip – baby controls milk flow
2. Extra-soft, flexible silicone – adapts to baby's palate and encourages natural tongue movement
3. Inner vertical ridges – make it stronger and collapse-resistant
4. Wide, secure base – for easy latch and secure seal
5. Anti-colic Air Ventilation System – reduces intake of air
6. One piece teat – easy to use and clean

Instructions for Use

Fill bottle with the required amount of liquid and tighten the screw cap. Heating in a microwave is not recommended. If you choose to microwave food, do not

seal the bottle. Remove teat, collar and cap when using in the microwave. Shake well before use and always check temperature before offering to baby. Unevenly heated food can burn baby's mouth.

IMPORTANT!

Do not microwave breastmilk, as microwaving alters the composition of the milk.

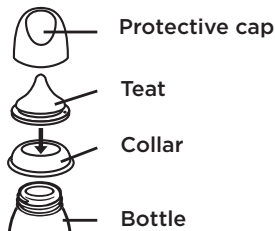
When carrying a full bottle, make sure it is closed with the cap in place, taking care to position the teat in the centre of the cap centre of the cap to prevent spills.

Cleaning

Before first use, place the teat, collar, cap, and bottle in boiling water for 5 minutes. Allow to cool and dry completely before using. Before every use, wash the teat and components in warm soapy water. Rinse thoroughly and allow to dry. Clean before each use.

Assembly

Once thoroughly dry, insert feeding teat through the top of the screw cap collar. Attach the screw cap collar securely onto the bottle neck. Only use the Lansinoh® NaturalWave® teat with the Lansinoh® feeding bottle.



Insert the teat into the top of the collar

Precautions

When not in use, store in a dry and covered place. Always use this product with adult supervision. Do not clean, store or allow to come into contact with solvents or harsh chemicals. Damage could result. Do not leave the product in direct sunlight or heat, or leave in sterilising solution for longer than recommended. Do not warm the liquid by placing the bottle directly onto gas or electric rings, warming plates, in electric ovens etc.

WARNING for your child's safety and health

Always use this product with adult supervision. Never use feeding teats as a soother. Continuous and prolonged sucking of fluids will cause tooth decay. Always check food temperature before feeding. Keep all components not in use out of reach of children. Do not leave the baby alone with drinking equipment due to the risk of choking, the baby falling over or if the product has disassembled.

Throw teat away at the first sign of damage or weakness. For safety and hygiene reasons, we recommend you replace the teat every 7 weeks.

5. TECHNICAL DATA

Power Supply

AC Adapter operation: 100V/240V wall plug type AC adapter, galvanically isolated with 5V DC output voltage.

Pump power dissipation: 10 watts maximum

Voltage regulation: Linear voltage regulator with low dropout voltage and short circuit protection.

Power bank operation: CE marked and 5V/2A power bank can be used.

Control System

Control unit: Microcontroller with integral program memory

Program memory: 8K flash ROM, 1K RAM memory

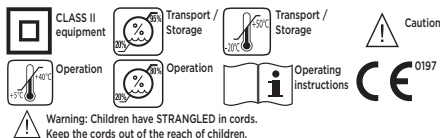
There are 2 phases: Let-Down and Expression selectable from keypad.

Adjustable suction level: 5 suction levels are selectable and controlled from keypad.

Suction vacuum level: Minimum 50 mmHg, maximum 250 mmHg

Regulatory Compliance

Type BF Applied Part



Simsukian Adapter: Has CE certification for European market.

6. CUSTOMER CARE

Lansinoh is here to support you in your breastfeeding journey, so if you have any questions, please **visit www.lansinoh.co.uk, call +44 (0) 113 205 4201 in the UK**, or contact your country distributor for guidance.

7. WARRANTY

Limited Consumer Product Warranty

This product is warranted to the original consumer purchased (the "purchaser") to be free from defects in material and workmanship which are not commercially acceptable for the period of two years from the date of purchase on the pump mechanism and the period of 90 days on all other product components. Warranty coverage terminates if you sell or otherwise transfer this product to another person. This warranty gives you specific legal rights and you may also have other rights, which vary by location.

LANSINOH MAKES NO EXPRESS WARRANTY OF ANY KIND REGARDING THE PRODUCT OTHER THAN THOSE WARRANTIES EXPLICITLY SET FORTH

HEREIN. ANY IMPLIED WARRANTY, INCLUDING ANY IMPLIED WARRANTY OF MERCHANTABILITY OR ANY IMPLIED WARRANTY OF FITNESS FOR A PARTICULAR PURPOSE, TO THE EXTENT PERMITTED BY LAW, SHALL BE LIMITED IN DURATION TO A PERIOD OF 90 DAYS FROM THE DATE OF PURCHASE BY THE ORIGINAL PURCHASER.

In the event the product is found by Lansinoh® to not meet the above limited warranty, as purchaser's sole and exclusive remedy Lansinoh® will not repair or, at the option of Lansinoh®, replace this product with charge for such replacement or parts or labour.

NOTE: The purchaser shall bear all expense for returning this product to Lansinoh®. This warranty does not apply to any product that has been subjected to misuse, abuse, or alteration. Only Lansinoh® replacement parts and accessories are recommended for use with Lansinoh® breastfeeding products. Improper or incorrectly performed maintenance or repair or use of non-Lansinoh® replacement parts or accessories may invalidate this warranty.

TO THE EXTENT PERMITTED BY LAW, LANSINOH SHALL NOT BE LIABLE FOR ANY INCIDENTAL OR CONSEQUENTIAL DAMAGES INCLUDING, BUT NOT LIMITED TO, REPLACEMENT COSTS RESULTING FROM THE BREACH OF ANY WRITTEN OR IMPLIED WARRANTY.

If you wish to make a claim under this warranty, please telephone **+44 (0) 113 205 4201 in the UK**, or contact your country distributor. You will be given a Freepost address to return the product, if necessary, together with your original dated bill of sale or other dated proof of purchase and a brief statement of the problem.

Declaration for Electromagnetic Compatibility (EMC)

For information use only

FCC Statement

This device complies with part 15 of the FCC rules. Operation is subject to the following two conditions: (1) This device may not cause harmful interference, and (2) this device must accept any interference received, including interference that may cause undesired operation.

Wireless Statement

Wireless communications equipment such as wireless home network devices, mobile phones, cordless telephones and their base stations, walkie-talkies can affect this equipment and should be kept at least a distance of 3.5m away from the equipment.

Stacking

This device should not be used adjacent to or stacked with other equipment. And if adjacent or stacked use is necessary, this device should be observed to verify normal operation in the configuration in which it will be used.

This product is a personal care product and therefore cannot be returned once opened. If you experience any problems with the product, please call **+44 (0) 113 205 4201 in the UK** or contact your country distributor. Our customer service team will be happy to assist you.

Recommended separation distance between Portable and mobile RF communications equipment and the model @ 3Vrms			
The Lansinoh® Compact Single Electric Breast Pump is intended for use in an electromagnetic environment in which radiated RF disturbances are controlled. The customer or the user of the Lansinoh® Compact Single Electric Breast Pump can help prevent electromagnetic interference by maintaining a minimum distance between portable and mobile RF communications equipment (transmitters) and the Lansinoh® Compact Single Electric Breast Pump as recommended below, according to the maximum output power of communications equipment.			
Separation distance according to frequency of transmitter m			
Rated Maximum output power of transmitter W	150 khz to 80 Mhz	80 Mhz to 800 Mhz	800 Mhz 2,5 Ghz
0,01	0,12	0,12	0,23
0,1	0,37	0,37	0,74
1	1,17	1,17	2,33
10	3,69	3,69	7,36
100	11,67	11,67	23,33

**Manufacturer: LANSINOH LABORATORIES SAG.
GEREC. TAS. SAN. TIC. LTD. STI.**

**Zafer SB Mah. Gunduz Sk. No:13 E.S.B. 35410
Gaziemir - İzmir - Turkey**

Lansinoh® Laboratories, Inc. Jason House, Kerry Hill,
Leeds, LS18 4JR, UK.

lansinoh.co.uk

Lansinoh® is a registered trademark of Lansinoh
Laboratories, Inc. ©2018 Lansinoh Laboratories, Inc. All
rights reserved.

Date of the IFU issued: 30March 2018

Lansinoh®

Lansinoh Laboratories Inc.

Jason House, Kerry Hill
Leeds, LS18 4JR, UK
www.lansinoh.co.uk

Lansinoh® is a registered trademark
of Lansinoh Laboratories, Inc.
©2018 Lansinoh Laboratories, Inc.
All Rights Reserved

SE540911F0318



Lansinoh Laboratories Saglik Gerecleri Tasarim San. Tic. Ltd. Sti.
Zafer SB Mah. Gunduz Sk. No:13 E.S.B Gaziemir/ Izmir/ Turkiye

304-045-00

